



# Molly Monkey

by Larissa Holland  
mmmcrafts.blogspot.com

Makes a 21 inch (53 cm) girlie monkey

© 2008 Larissa Holland. All rights reserved.

## List of Materials:

This is not exact. You could probably get away with less of some things. This list assumes 45 inch wide fabric. I recommend thin wale corduroy, woven mid-weight cottons and wool or wool blend felt.

### - Fabric:

- Thin wale corduroy 1/2 yard (head, arms, legs, tail)
- Shirt fabric 1/3 yard
- Sock fabric 1/4 yard
- Skirt - six 5"x5" charm squares
- Sleeves - one 5"x5" charm square

### - Felt:

- Beret - two 8"x12" pieces
- Shoes - one 8"x12" piece, one scrap of accent color
- Face, ears & hair - one 8"x12" piece
- Eyes - scrap of white/cream and scrap of iris color

### - Notions:

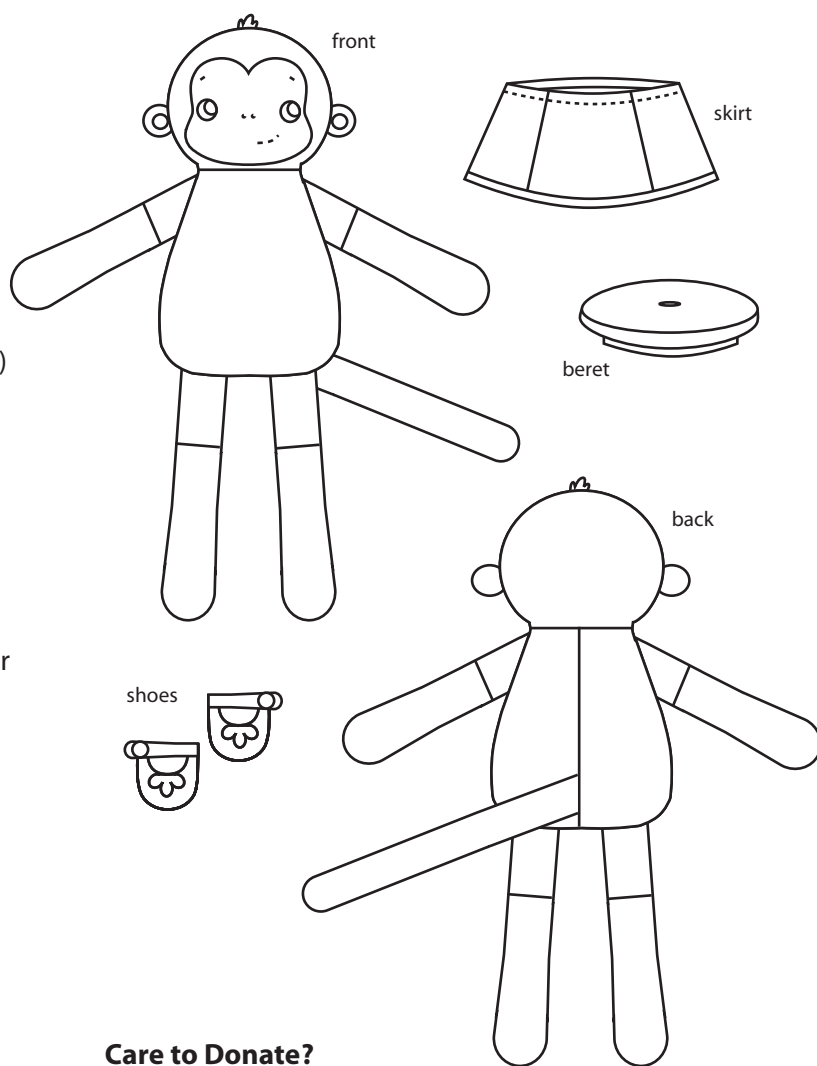
- Approx. 31 inches of 1/2" double fold bias tape
- Approx. 12 inches of 1/4" elastic
- Three 3/8" buttons for shoes and beret
- Approx. 14 inches of 3/8" ribbon for beret
- Embroidery floss for face
- Fabric glue (non-toxic for kiddos under 3)
- Bag of poly stuffing

## Find a mistake?

Hopefully not, but if you do, it'd be swell if you would email me at [me@larissaholland.com](mailto:me@larissaholland.com).

## PLEASE READ FOR KIDS UNDER 3 YRS:

Most tiny tots like to chew stuff and buttons are a choking hazard for them. For children under three, use embroidery instead of buttons.



## Care to Donate?

If you end up really happy with your Molly Monkey, perhaps you will consider going to my blog and clicking on the handy donate button to zap me a few dollars via PayPal. Your kindness is most appreciated!

[mmmcrafts.blogspot.com](http://mmmcrafts.blogspot.com)

*Special thanks to Olivia and Chandra, my intrepid pattern guinea pigs, for your valuable input.*

# Molly Monkey

© 2008 Larissa Holland. All rights reserved.

## CUT OUT THE PATTERN PIECES

All pieces are actual size with seam allowance included. Pin pattern pieces to your fabric and cut out the number indicated. **Seam allowance is 1/4 inch unless otherwise noted.**

**RST = Right Sides Together**, which in this step means you will cut two layers of fabric at the same time that are pinned together facing each other (this is usually accomplished by folding the fabric). This is essential to making the asymmetrical pieces match up for sewing.

## SEW THE TAIL, ARMS, LEGS AND EARS.

**1)** Align TAIL pieces RST (right sides together), pin, and sew around 3 sides, leaving the base of the tail unsewn. Clip curves. Turn and press\*. Stuff the tail and baste the opening shut.

**2)** Align one SLEEVE and ARM piece RST, pin, and sew. Press seam open. Repeat with the other SLEEVE and ARM pieces and then the LEG and SOCK pieces.

**3)** Align one completed SLEEVE/ARM right sides together with an opposite SLEEVE/ARM piece and pin, being sure to align seams.

Sew, leaving a 2 inch gap for stuffing as shown in fig 3). Be sure to backstitch to secure your seam. Leave the ends unsewn as shown. Clip curves. Turn and press\*. Repeat with the other SLEEVE/ARM pieces, and again with the LEG/SOCK pieces. **DO NOT STUFF.**

**4)** Align two EAR pieces RST, pin, and sew around, leaving flat side open. Clip curves, Turn and press\*. Repeat with remaining EAR pieces.

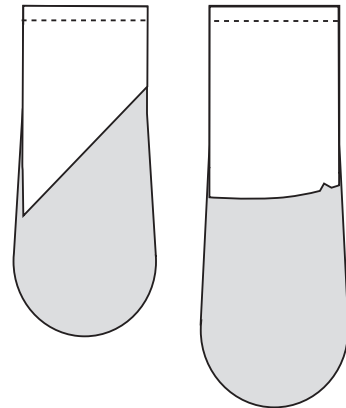
\*Anytime you iron corduroy on the right side, use a protective piece of fabric in between the iron and corduroy

■ = Right side  
□ = Wrong side

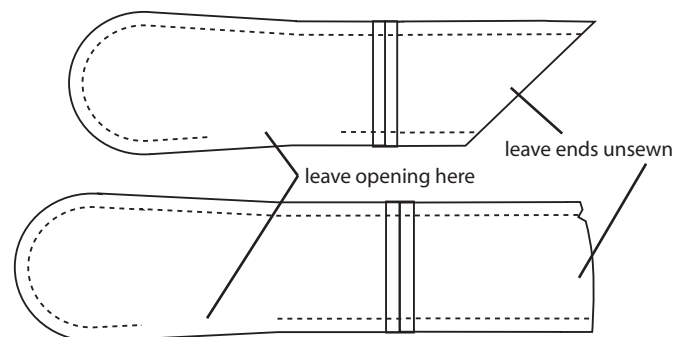
1)



2)

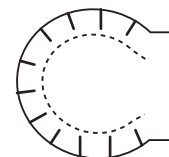


3)



4)

On all curvy pieces, like the ears, it is important to clip your curves before turning.



# Molly Monkey

© 2008 Larissa Holland. All rights reserved.

## MAKE THE BODY

**5)** Align the SHIRT BACK pieces right sides together and pin along the straight edge. Slip the tail in between the pieces where marked and make sure the raw edges align. Pin. Sew, leaving an opening (fig. 5), and press seam open.

**6)** Align the right sides of one HEAD piece and the SHIRT FRONT piece together at the neck edges. Pin, sew and press the seam. Repeat with the remaining HEAD and SHIRT BACK pieces.

(If you prefer to sew on the face now instead of after stuffing, skip ahead to steps 10-12, then proceed from here.)

**7)** Baste the HAIR, EARS, ARMS and LEGS RST to the HEAD/FRONT piece as marked, aligning the raw edges. I use fabric glue to baste.

**8)** Tucking the arms, legs and tail inside, pin the HEAD/FRONT and HEAD/BACK pieces right sides together. Pull the arms, legs and tail out through the opening in the BACK center seam to allow for easier pinning/sewing. Sew all the way around. Clip all the curves.

## STUFFING AND FINISHING

**9)** Turn monkey right side out through the opening in the back, and press\*. Stuff the head, then the body. Whipstitch the opening in the back closed, turning under the 1/4 inch seam allowance. Stuff the legs and arms through the openings. Whipstitch the openings closed.

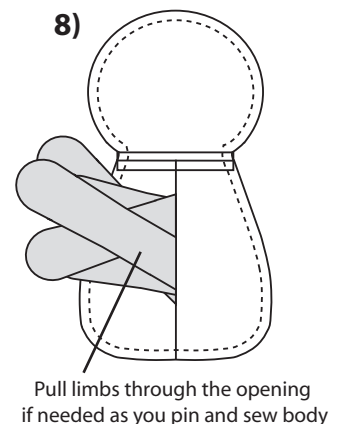
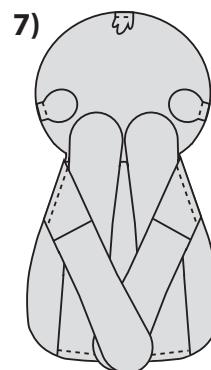
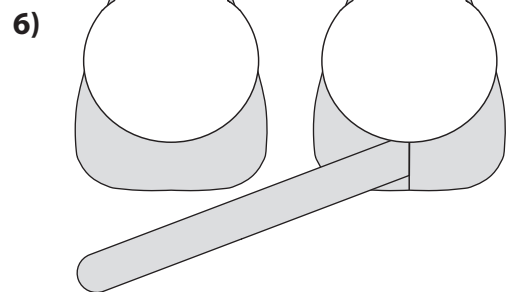
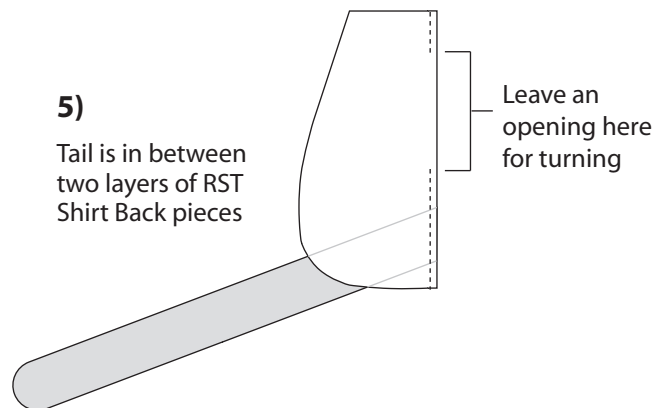
**10)** Using fabric glue, assemble the EYE and IRIS pieces. Glue them on the FACE piece using the pattern piece as a placement guide. Whipstitch around the eyes and irises with matching thread.

**11)** Mark placement of nose, eyebrows and mouth with disappearing ink. The nose is made

with two french knots. Embroider the rest of the facial features with a running or chain stitch.

**12)** Secure the completed FACE piece on the head with small dots of fabric glue. Whipstitch or blanket stitch all around the edge with matching embroidery thread, taking care to keep the face smoothed down. Whipstitch the INSIDE EAR pieces in place.

\*Anytime you iron corduroy on the right side, use a protective piece of fabric in between the iron and corduroy

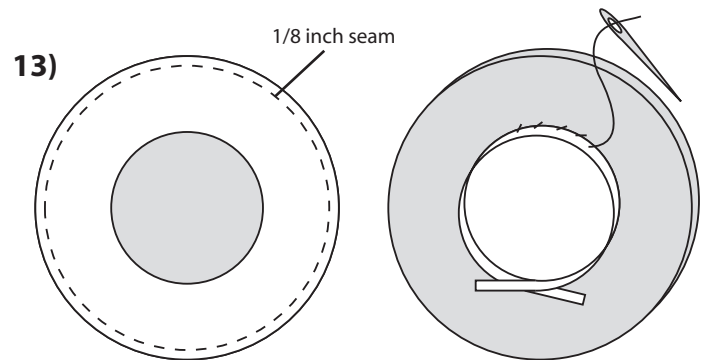


# Molly Monkey

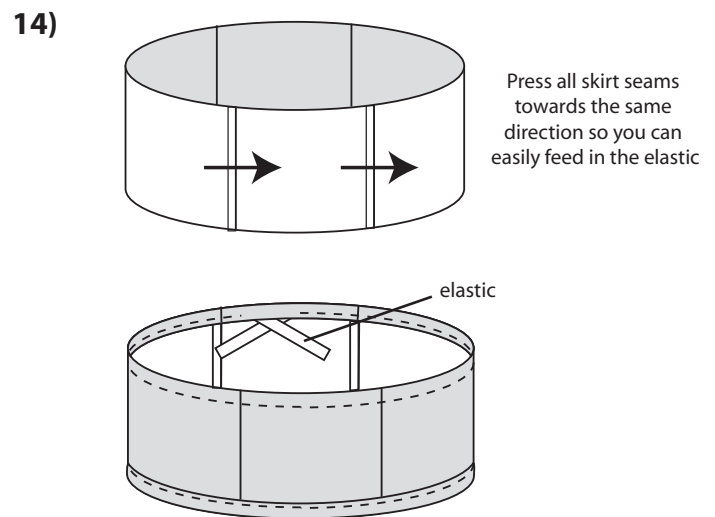
© 2008 Larissa Holland. All rights reserved.

## MAKE MOLLY SOME CLOTHES

**13)** Align and pin the two beret pieces (RST if you are using something besides wool felt). Sew **1/8 inch seam** all around. Turn right side out. Whipstitch the length of 3/8 inch ribbon around the head opening, leaving an inch overlap to form a V at the back. Trim ribbon. Sew a button in the middle of the top of the beret, if desired.



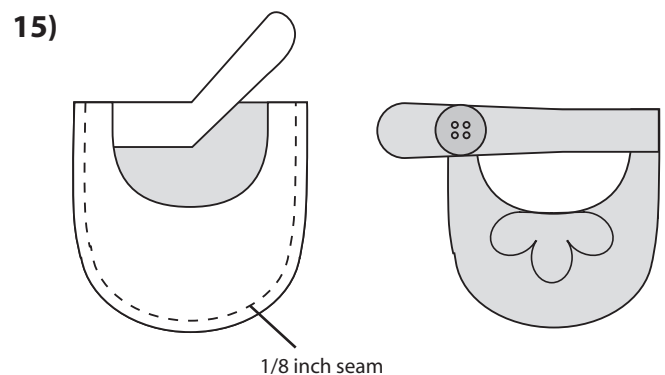
**14)** Molly's skirt is made from six 5x5 inch charm squares. If you don't have charm squares, cut your own 5x5 squares from various fabrics. Sew all the squares RST end to end to form a tube. Press the seams all in the same direction.



Bind one edge with coordinating bias tape. Overlock or use pinking shears on other edge, then turn it down 1/2 inch and press. Edgestitch to form a tube for elastic, leaving a two inch opening to feed in the elastic.

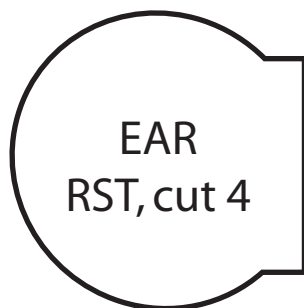
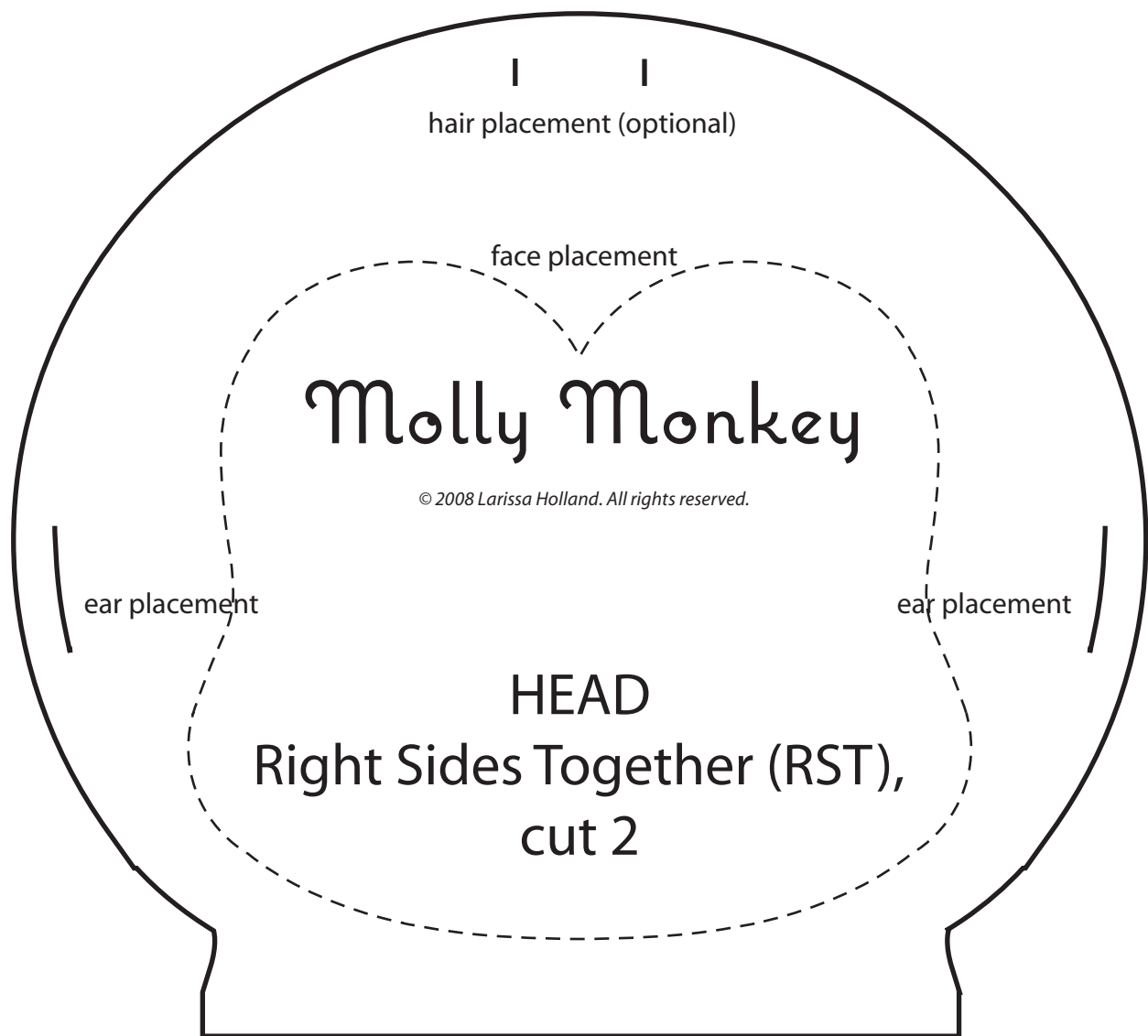
Feed 1/4 inch elastic through the tube (in the same direction you pressed your seams) and gather in the waist. Adjust the fit for your monkey's waist. Trim elastic to fit plus 1/2 inch and sew the overlapped ends of the elastic together. Tuck the elastic inside the tube, and edgestitch the tube closed.

**15)** Layer one SHOE UPPER, STRAP and SHOE SOLE RST with the strap in between the layers. Align edge as shown. Sew with **1/8 inch seam**, being careful to keep the end of the strap free. Turn right side out.



Glue or embroider on the shoe decoration. Put the shoe on Molly to test for fit, and glue or stitch the strap down to the shoe. Add a button, if desired, to the strap. Repeat for the other shoe, but **reversing** strap placement.

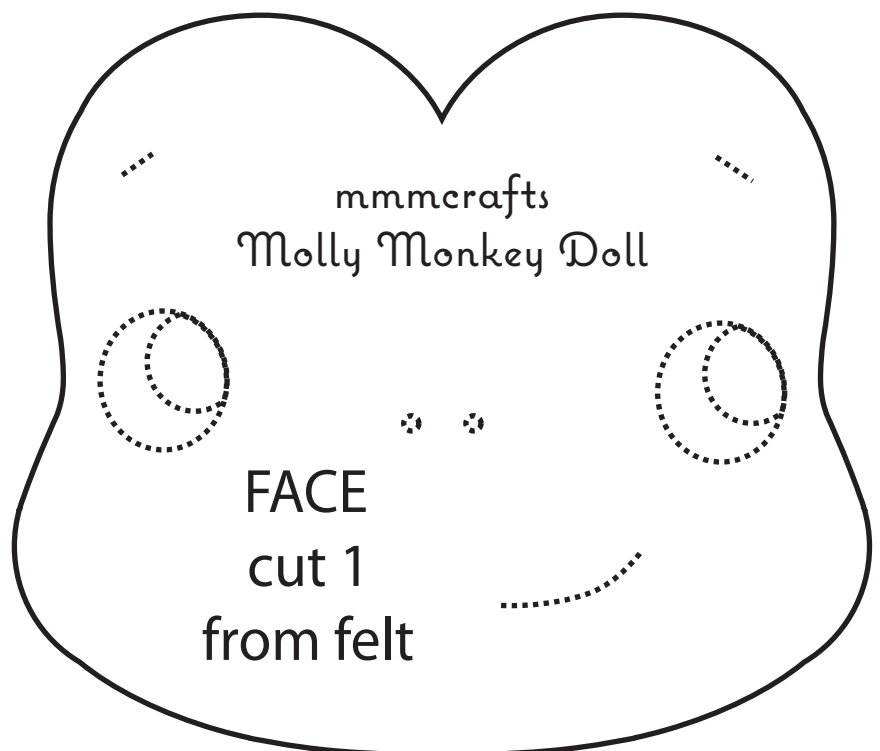
Note: Since our Molly's mom is a four year old, I opted to glue on Molly's shoes with Fabritac® and sew on the beret, so they wouldn't be lost forever in the toy abyss.



hair is optional



USE TO ALIGN THE EYE AND IRIS PIECES, THEN TRIM OFF BEFORE GLUING TO THE FACE.





A large, irregular pattern piece for the back of a shirt. It has a straight vertical edge on the right side, a straight horizontal edge at the top, and a curved edge on the left. Two small horizontal tick marks are on the right edge, one above and one below the center.

Molly Monkey

© 2008 Larissa Holland. All rights reserved.

SHIRT BACK  
RST, cut 2

tail here



A pattern piece for a sock. It is a long, narrow, rounded rectangle with a straight vertical edge on the right, a straight horizontal edge at the top, and a curved edge on the left and bottom.

SOCK  
RST, cut 4



A pattern piece for an arm. It has a rounded left edge, a straight vertical edge on the right, and a slightly curved bottom edge.

ARM  
RST, cut 4

arm placement

arm placement

# Molly Monkey

© 2008 Larissa Holland. All rights reserved.

## SHIRT FRONT cut 1

leg placement

leg placement

SLEEVE  
RST, cut 4

LEG  
RST, cut 4

# Molly Monkey

© 2008 Larissa Holland. All rights reserved.

so your pattern piece  
looks like this:



## TAIL RST, cut 2

Pattern Note:

The tail was too long to have the pattern piece on one page, so cut out both halves of the tail pattern and tape it together where indicated before tracing on the fabric.

Tail half no. 1

tape together here

tape together here

Tail half no. 2



BERET  
cut 2 from felt

on ONE piece only,  
cut this circle out  
for head opening.

Adjust size of hole  
to fit, as needed.

Molly Monkey

© 2008 Larissa Holland. All rights reserved.

SHOE SOLE  
cut 2 of felt

SHOE UPPER  
cut 2 of felt

shoe decoration  
cut 2 from felt

SHOE STRAP, cut 2 of felt